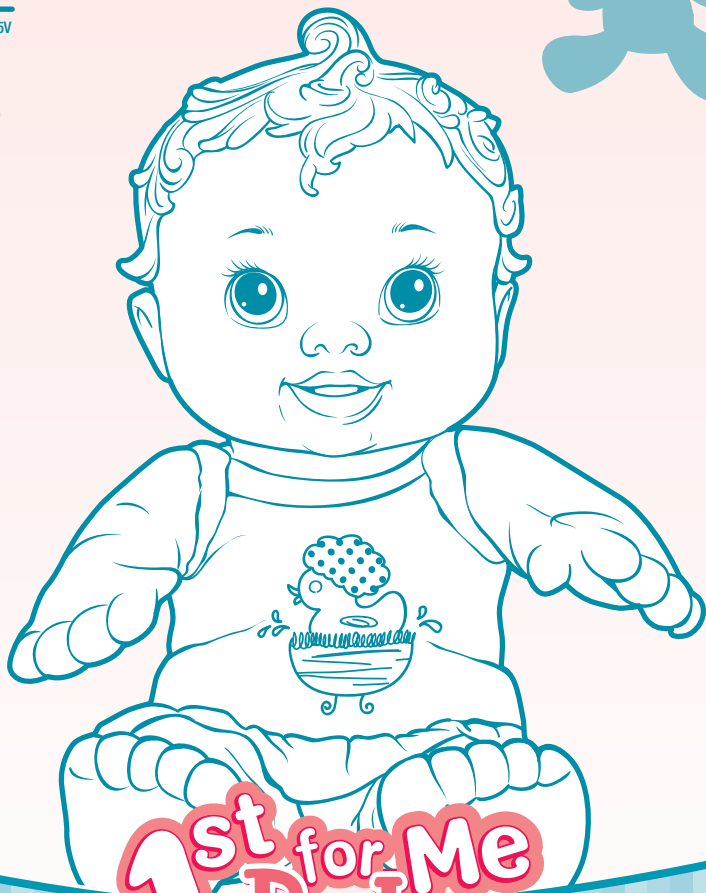


 **x2**  
**BATTERIES  
INCLUDED**

Replace with 2 x 1.5V  
"AA" or LR6 size  
alkaline batteries.  
Phillips/cross head  
screwdriver (not  
included) needed to  
replace batteries.

**OVER 18  
MONTHS**



**1st for Me  
Baby  
Alive™**

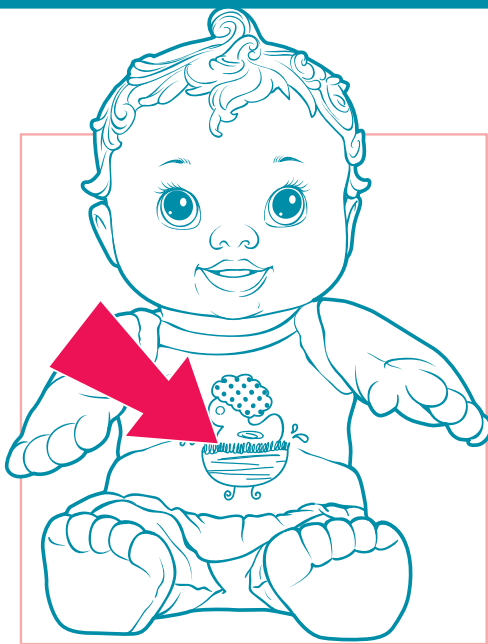
**Splash 'n Giggle™**

## TO PLAY

Your **SPLASH 'N GIGGLE** doll is made for bath time play! Press her tummy—she'll babble, giggle and make bubbly bath time sounds.

After playing with your doll in water:

1. Remove sound unit and squeeze doll to remove excess water.
2. Wrap doll in a towel and squeeze to absorb excess water.
3. Prop doll in upright position on a towel rack to air-dry, or tumble dry in pillowcase, low heat setting.
4. Reinsert sound unit.



**NOTE:** This doll is not recommended for outdoor use.

## TO CLEAN DOLL

**NOTE:** Be sure to remove sound unit from doll before machine washing.

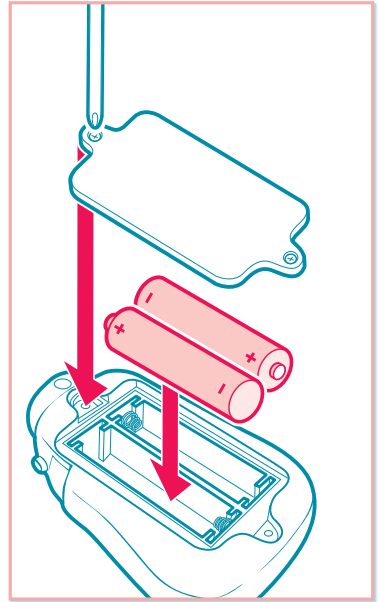
### MACHINE WASHABLE

1. Open fabric flap on doll's back and pull out sound unit.
2. Place doll in pillowcase and tie end closed.
3. Machine wash separately, gentle cycle (cold water, mild detergent, no bleach).
4. Tumble dry promptly in pillowcase, low heat setting.
5. Once doll is dry, reinsert sound unit with battery door facing back of doll.



# TO REPLACE BATTERIES

1. Open fabric flap on doll's back and pull out sound unit.
2. Loosen screws on battery door.
3. Remove and discard old batteries.
4. Replace with fresh 2 x 1.5V "AA" or LR6 size alkaline batteries.
5. Replace cover, tighten screws, and reinsert sound unit into doll. Be sure to position sound unit with battery door facing back of doll.



## IMPORTANT: BATTERY INFORMATION

### ⚠ CAUTION:

1. Always follow the instructions carefully. Use only batteries specified and be sure to insert them correctly by matching the + and - polarity markings.
2. Do not mix old batteries and new batteries or standard (carbon-zinc) with alkaline batteries.
3. Remove exhausted or dead batteries from the product.
4. Remove batteries if product is not to be played with for a long time.
5. Do not short-circuit the supply terminals.
6. Should this product cause, or be affected by, local electrical interference, move it away from other electrical equipment. Reset (switching off and back on again or removing and re-inserting batteries) if necessary.
7. **RECHARGEABLE BATTERIES:** Do not mix these with any other types of batteries. Always remove from the product before recharging. Recharge batteries under adult supervision. **DO NOT RECHARGE OTHER TYPES OF BATTERIES.**

# TROUBLESHOOTING

If your SPLASH 'N GIGGLE doll is unresponsive, or if sounds become erratic, the battery power may be low. Replace batteries.

## FCC Statement

This device complies with part 15 of the FCC Rules. Operation is subject to the following two conditions: (1) This device may not cause harmful interference, and (2) this device must accept any interference received, including interference that may cause undesired operation.

This equipment has been tested and found to comply with the limits for a Class B digital device, pursuant to part 15 of the FCC Rules. These limits are designed to provide reasonable protection against harmful interference in a residential installation. This equipment generates, uses and can radiate radio frequency energy, and, if not installed and used in accordance with the instructions, may cause harmful interference to radio communications. However, there is no guarantee that interference will not occur in a particular installation. If this equipment does cause harmful interference to radio or television reception, which can be determined by turning the equipment off and on, the user is encouraged to try to correct the interference by one or more of the following measures:

- Reorient or relocate the receiving antenna.
- Increase the separation between the equipment and receiver.
- Consult the dealer or an experienced radio/TV technician for help.

**CAUTION:** Changes or modifications to this unit not expressly approved by the party responsible for compliance could void the user's authority to operate the equipment.

Product and colors may vary.

© 2010 Hasbro. All Rights Reserved.  
TM & ® denote U.S. Trademarks.

26694

PN 7134310000



Questions? Call 1-800-327-8264



## Splash 'n Giggle™

### DRYING INSTRUCTIONS

After playing with your doll in water:

1. Remove sound unit and squeeze doll to remove excess water.
2. Wrap doll in a towel and squeeze to absorb excess water.
3. Reinsert sound unit.
4. Prop doll in upright position on a towel rack to air-dry.

Product and colors may vary.

© 2010 Hasbro. All Rights Reserved.  
TM & ® denote U.S. Trademarks.  
28721 & 27433

PN 7124210000

Visit



BabyAlive.com

Questions? Call 1-800-327-8264